

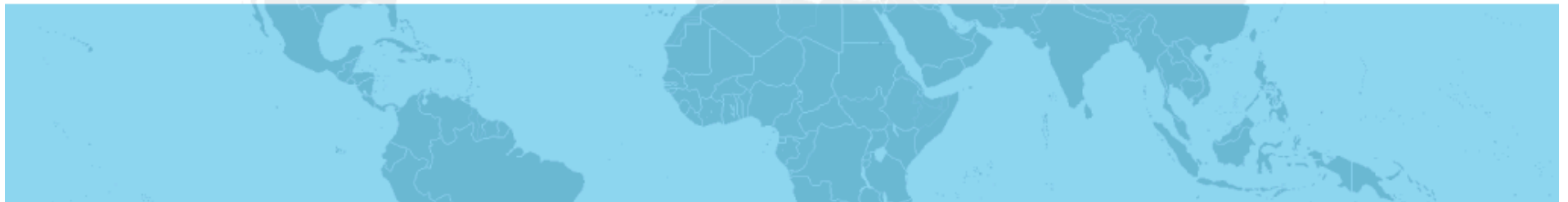


Intestine Transplant Association
A section of the Transplantation Society



Washington, DC September 15 – 18, 2011

Intestine Transplant Registry Report



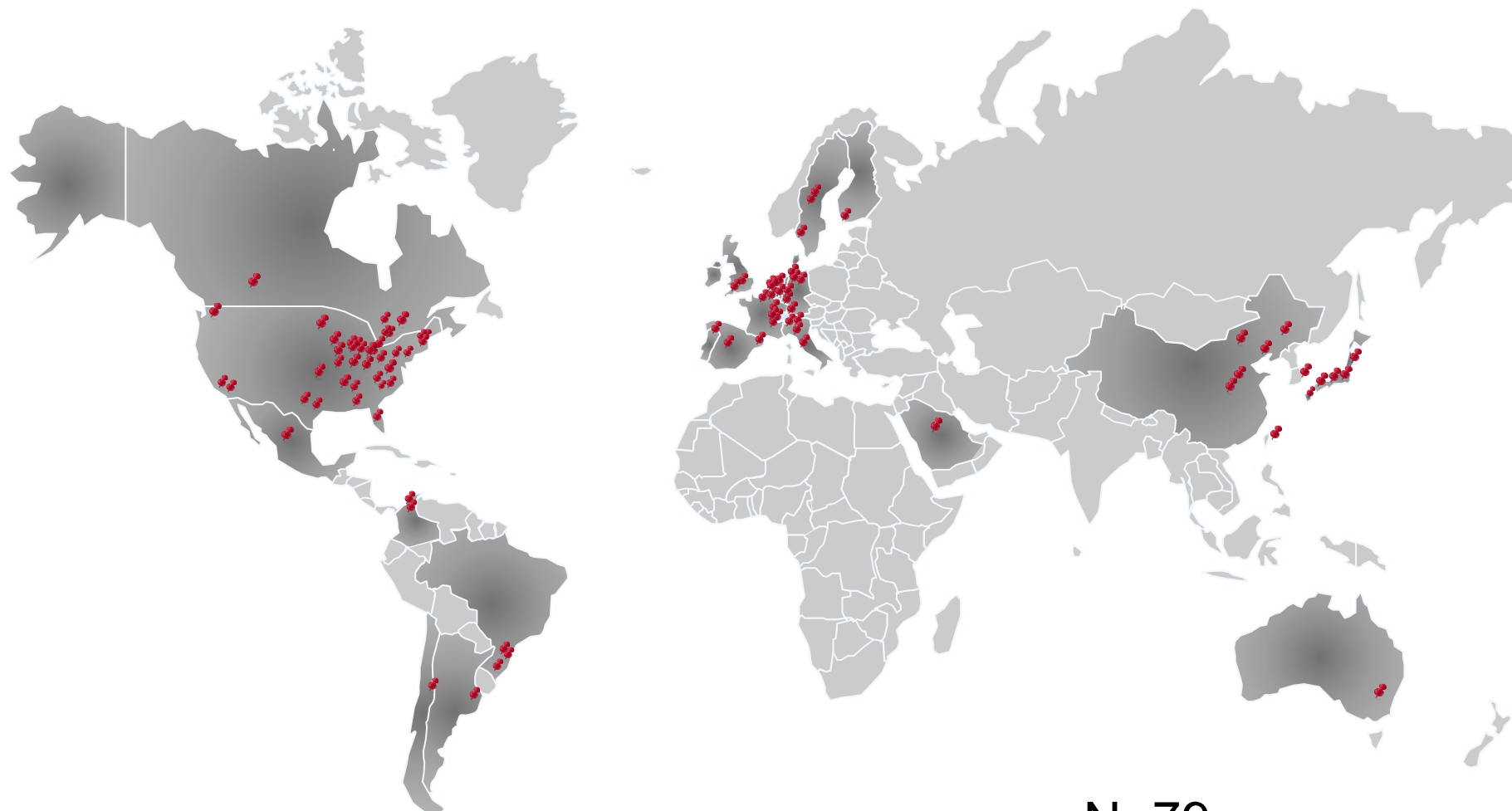


Overall Clinical Experience

Total Number of Transplants:	2611
Centre Count	79
Active Centres	35
SB Alone	1148 (43.9%)
SB+Liver	845 (32.4%)
Multivisceral	619 (23.7%)
Current Survivors	1341



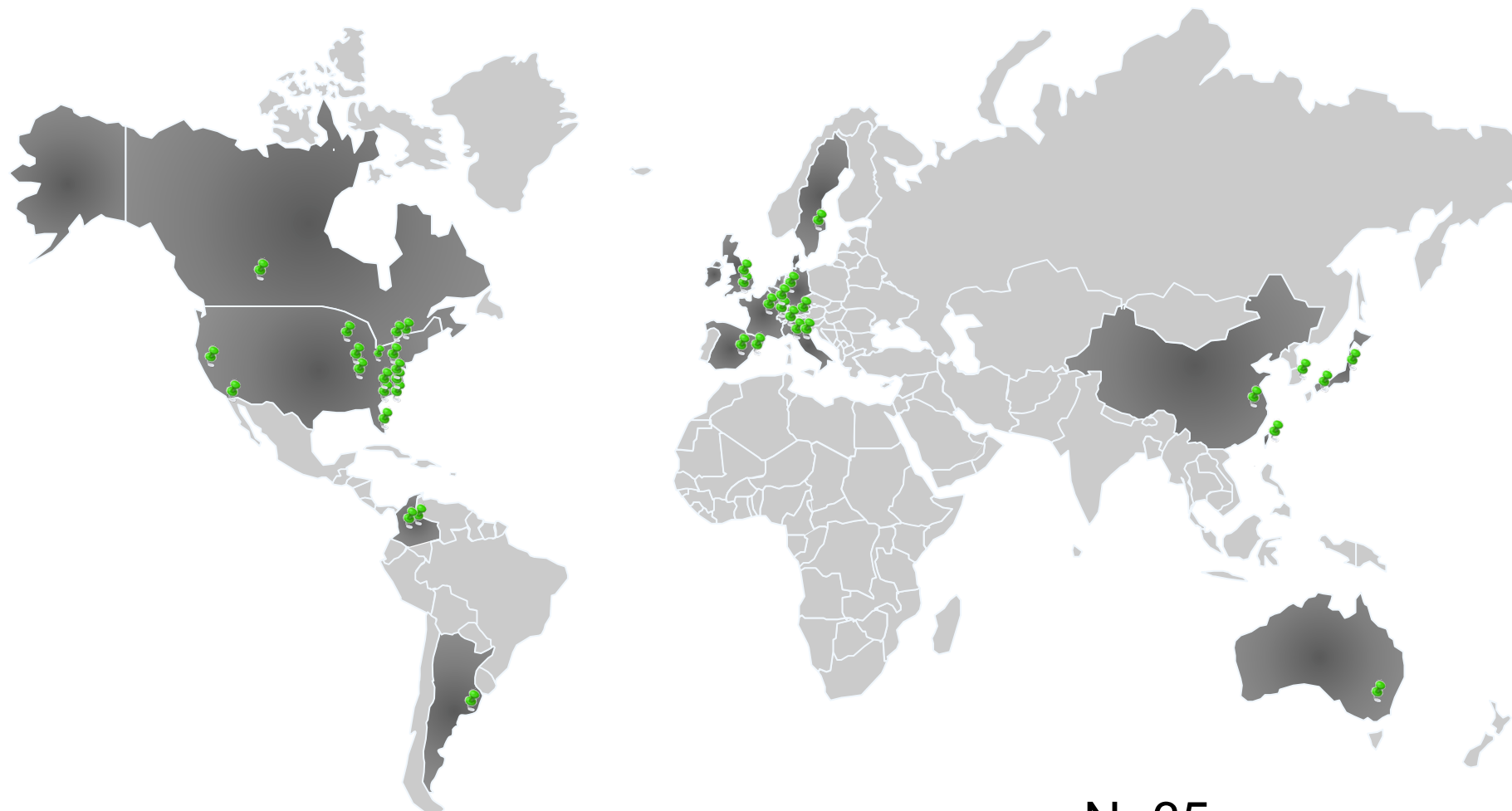
Transplant Centres Worldwide



N=79



Active Transplant Centres



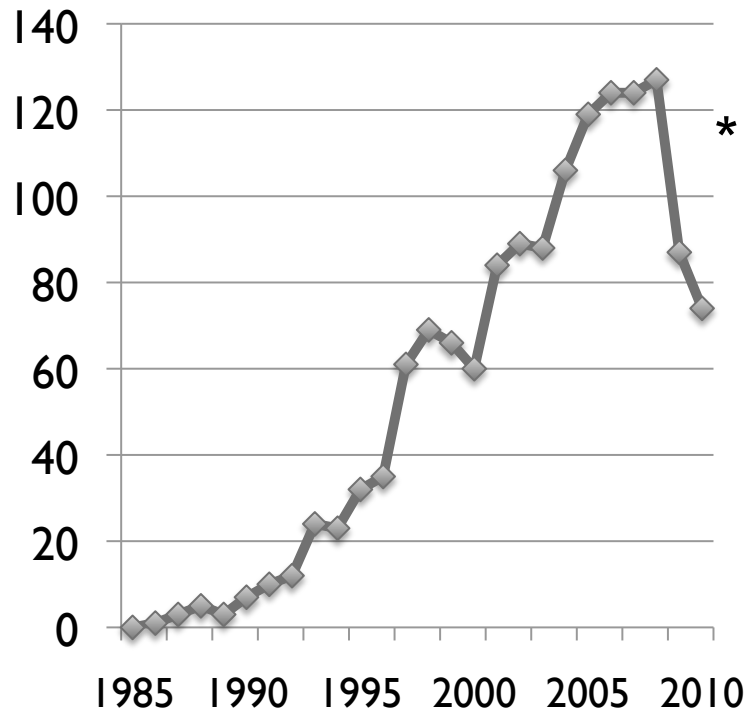
N=35



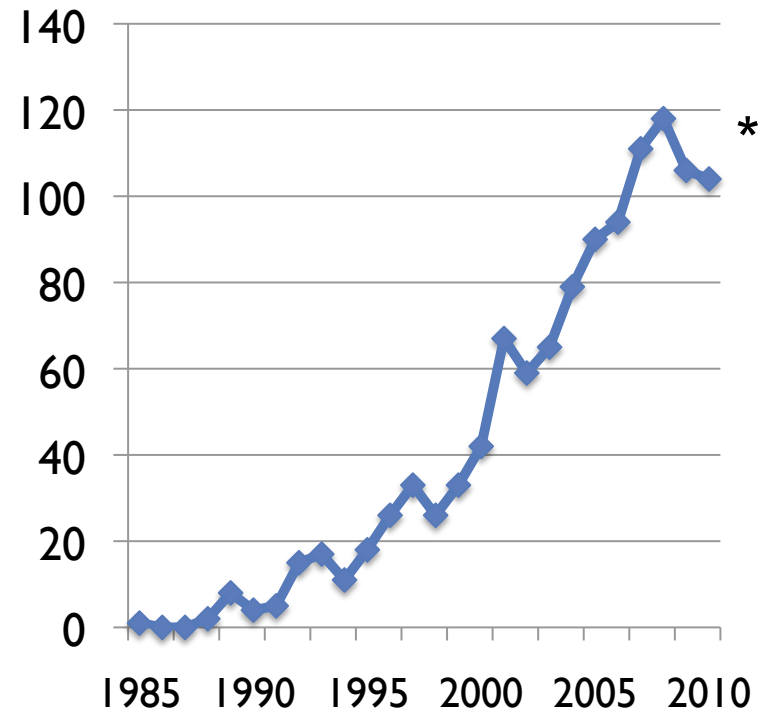
Intestinal Transplants Performed

Transplants Performed Worldwide

Children



Adults

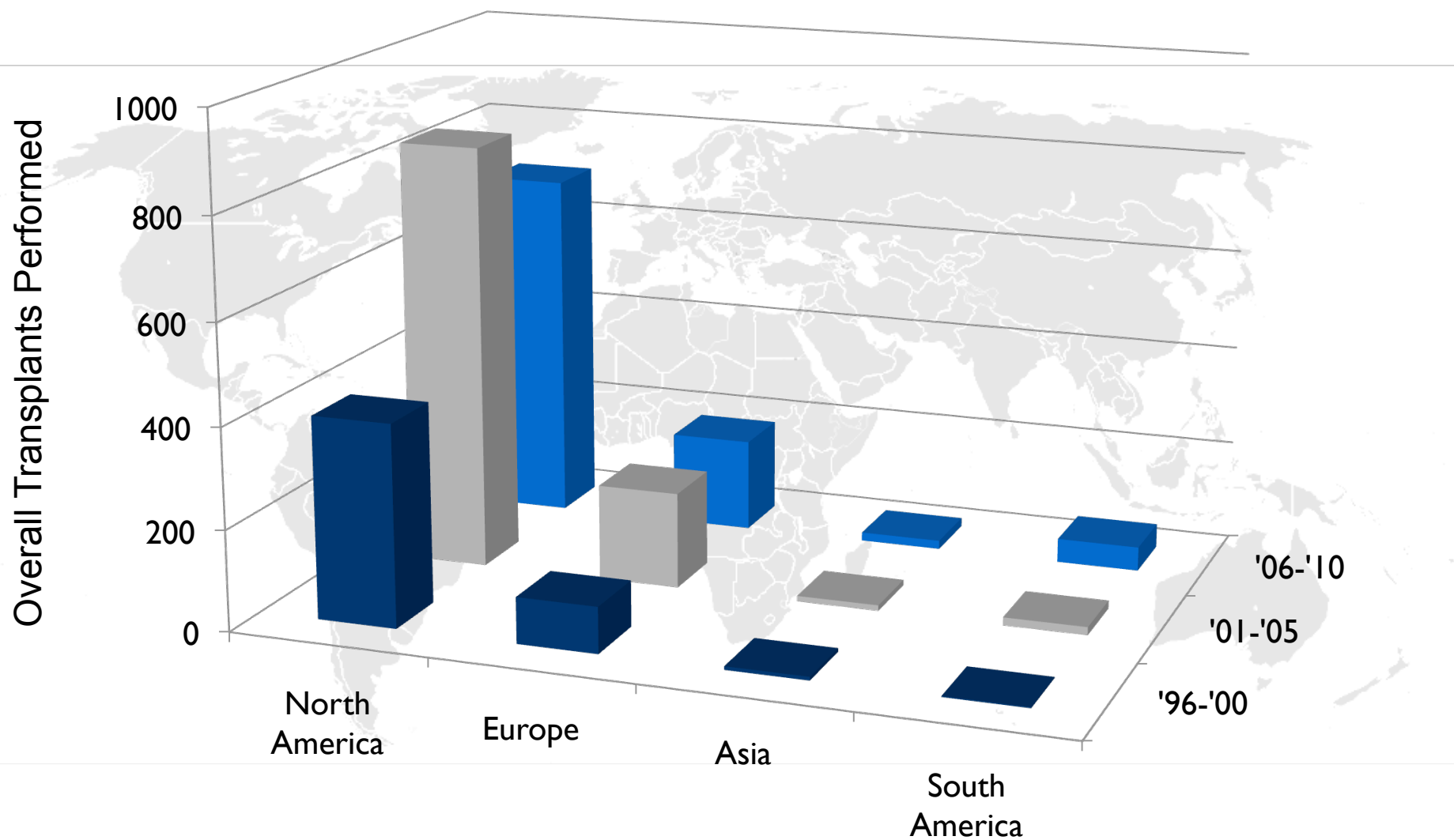


Year

**Preliminary 2011*



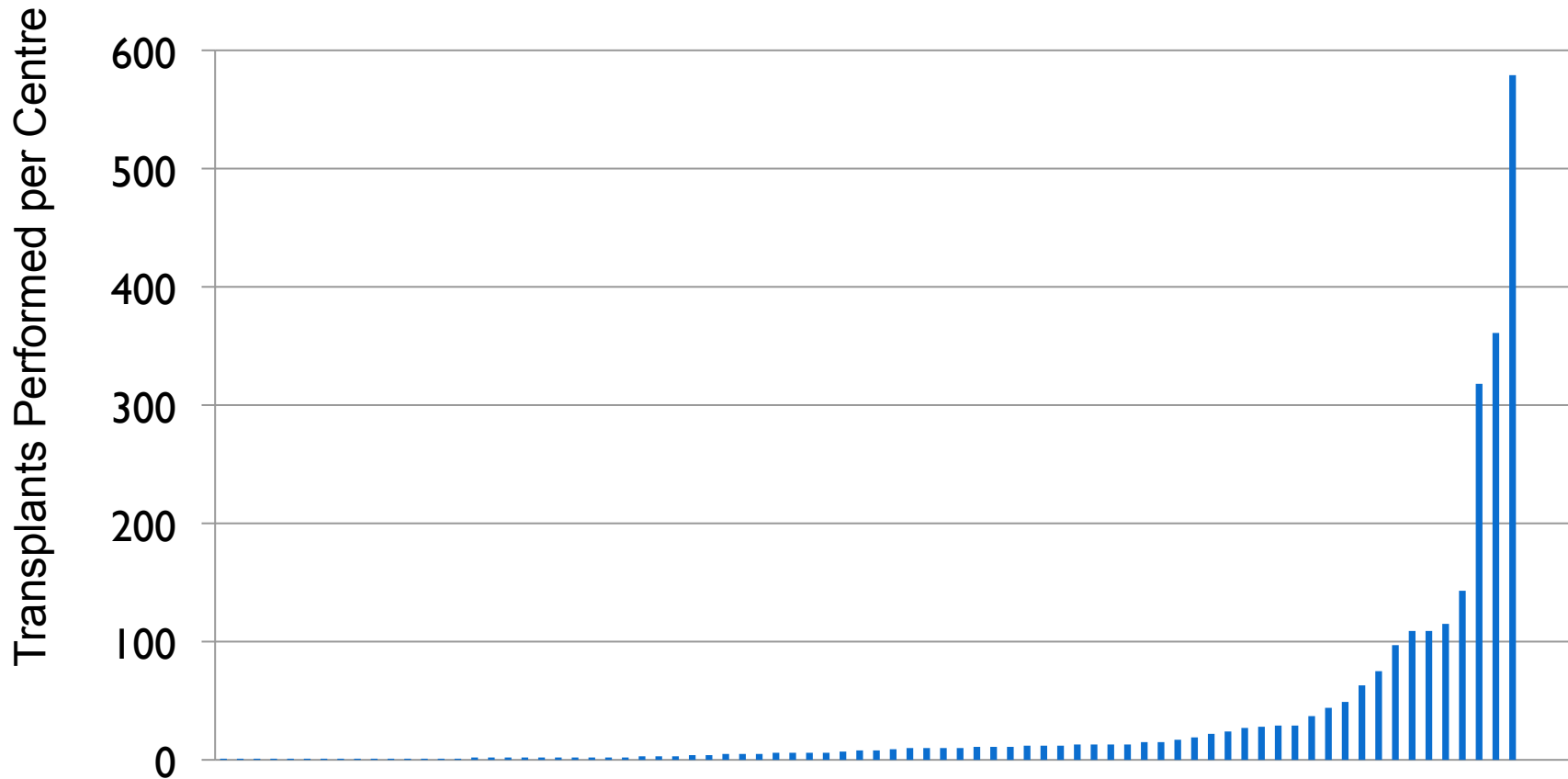
Transplant Activity Worldwide





Case Volume in 78 Centres

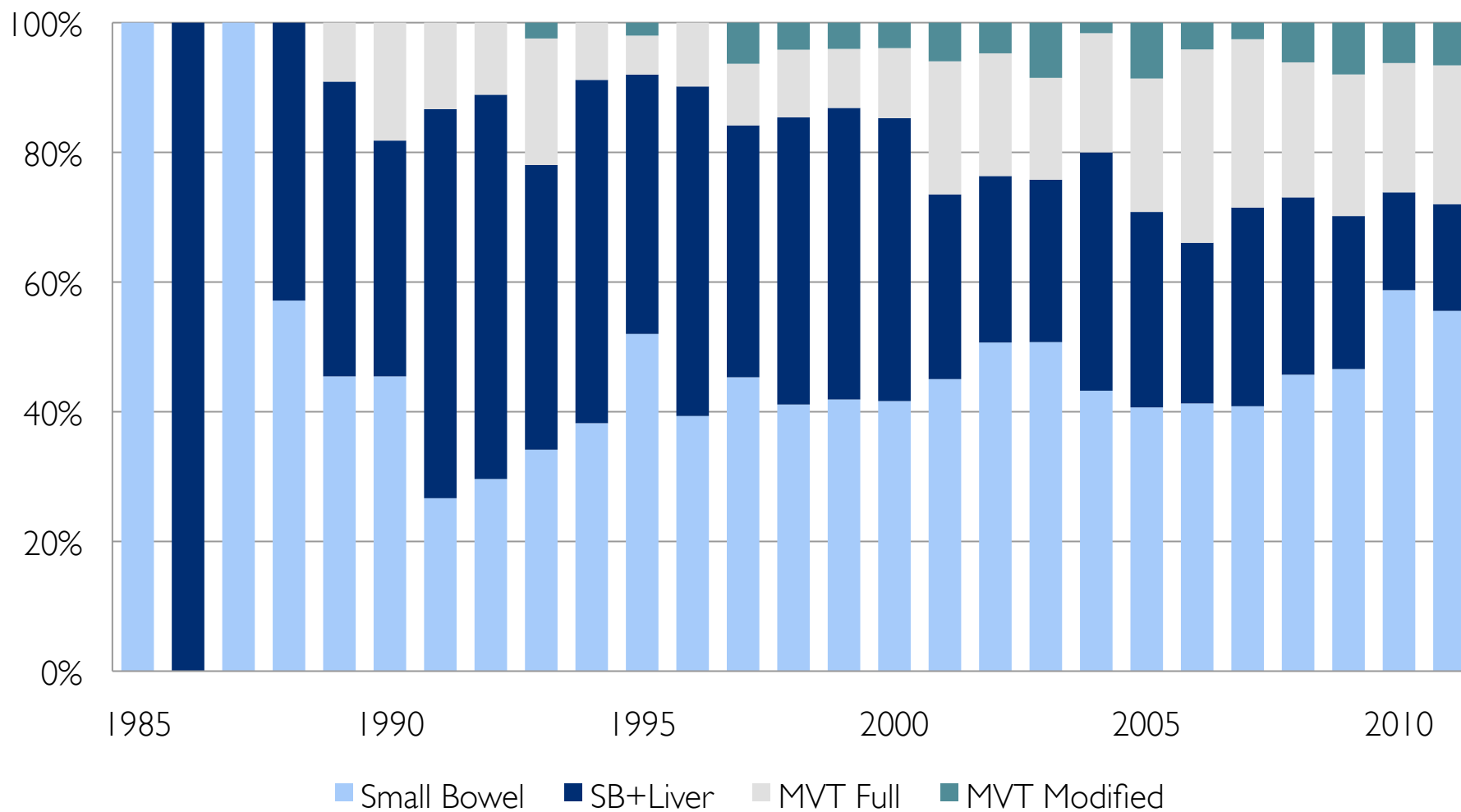
(n=2611)



Each center is represented by one column showing its total case volume



Transplant Type over Time



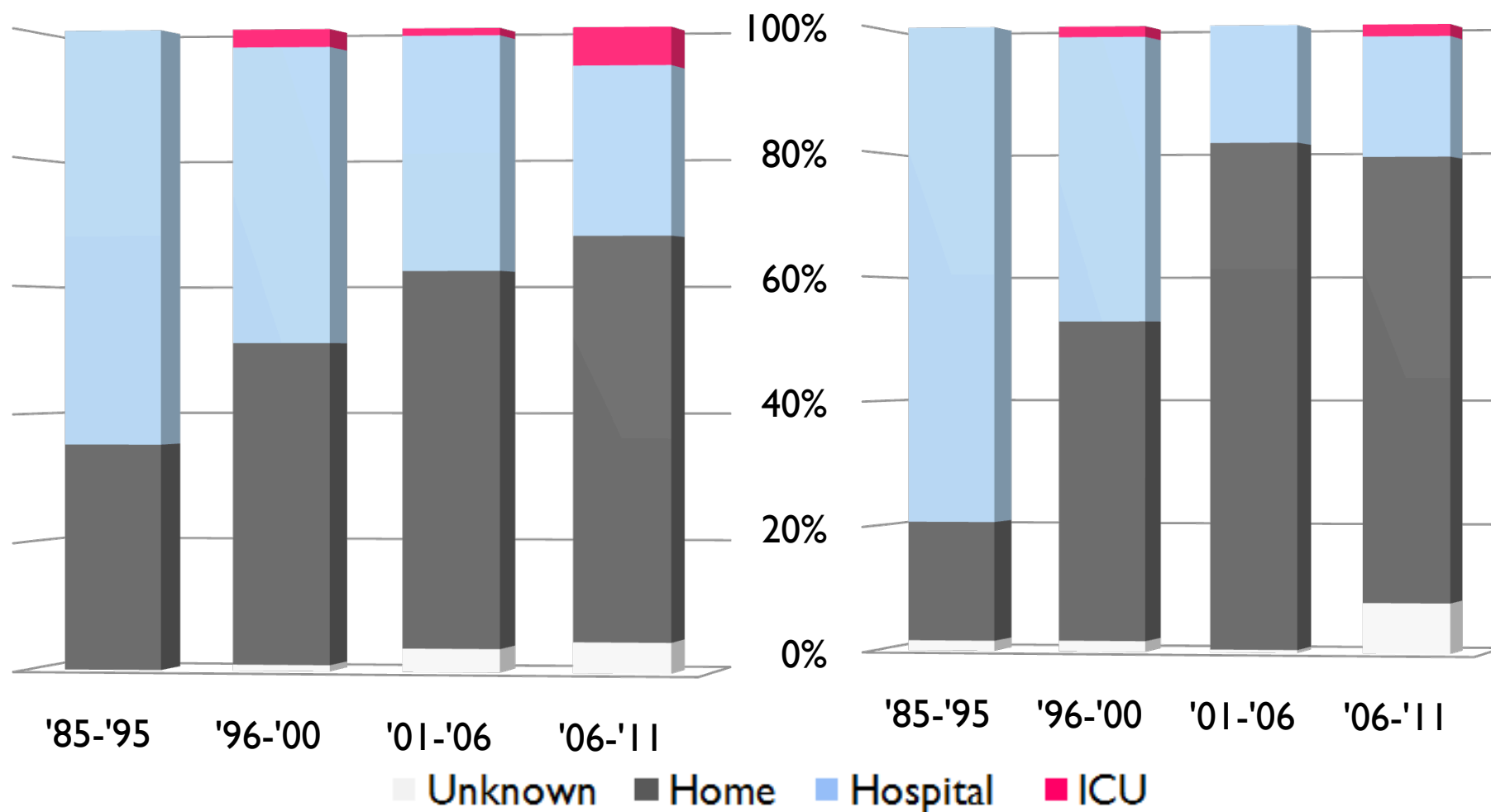


Pre-Tx Status Over Time



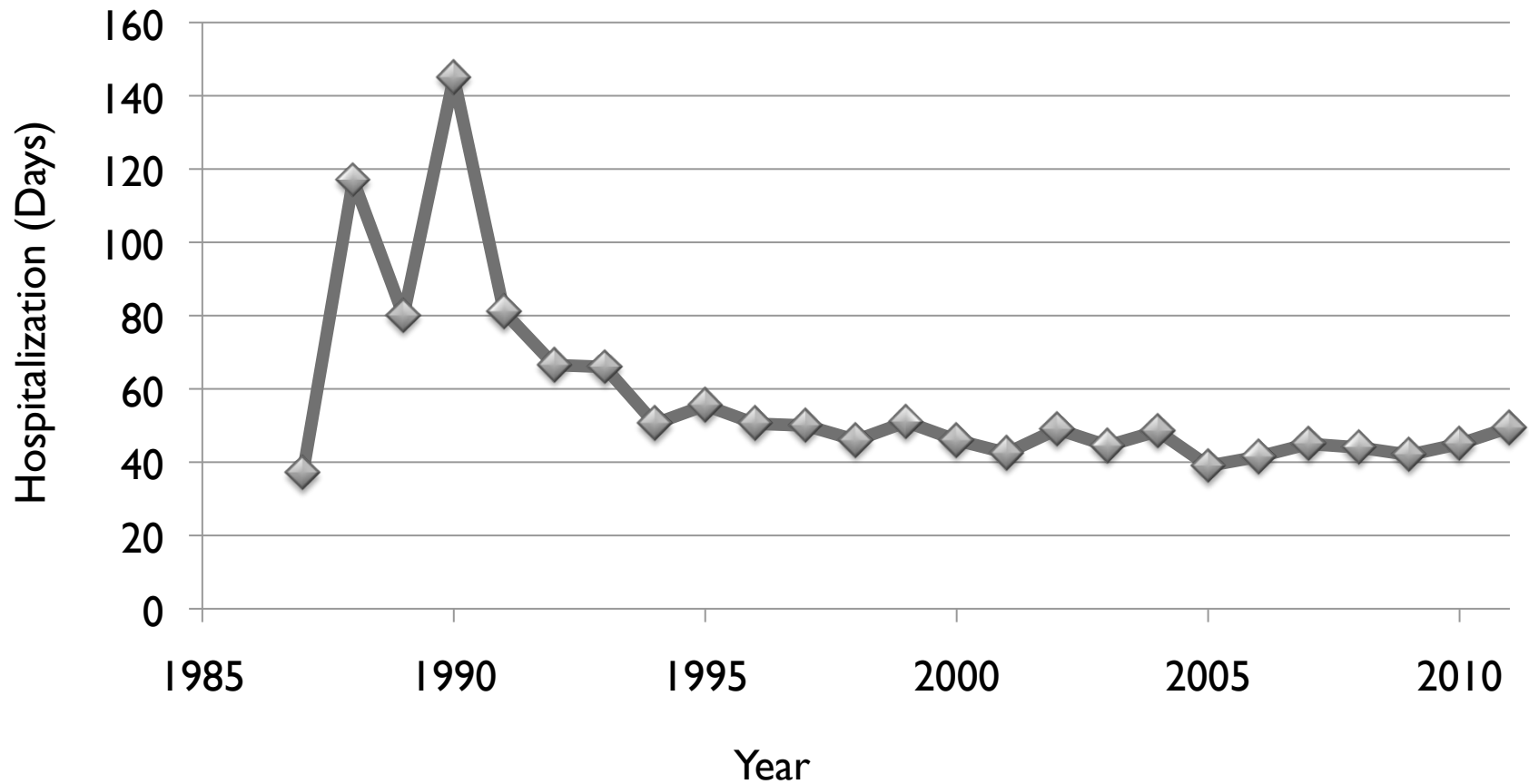
Children

Adults





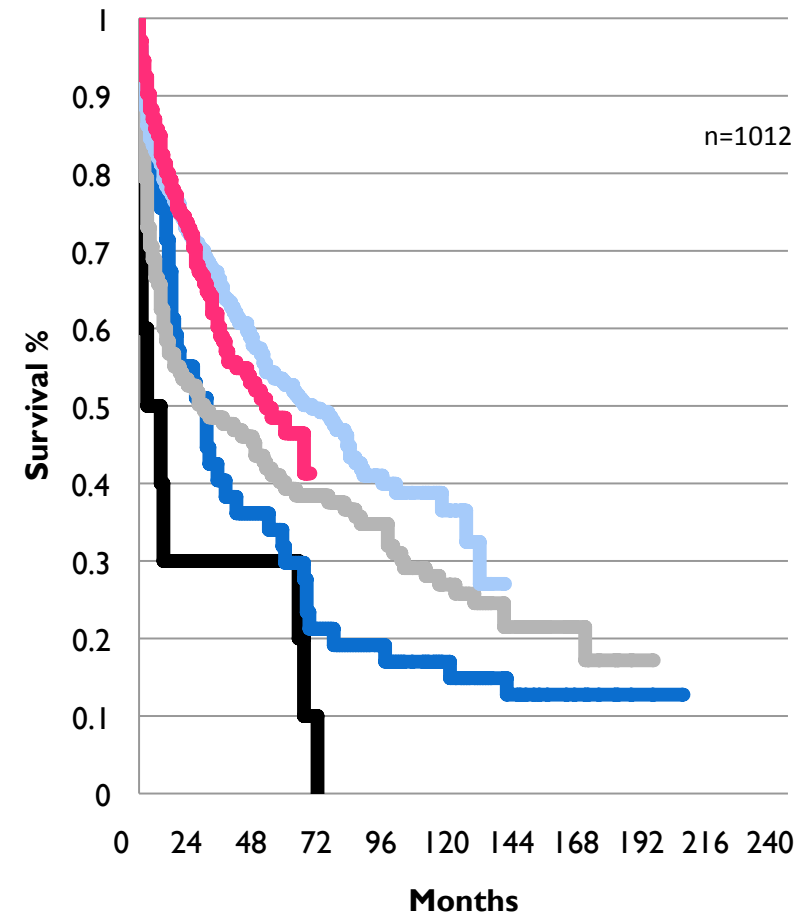
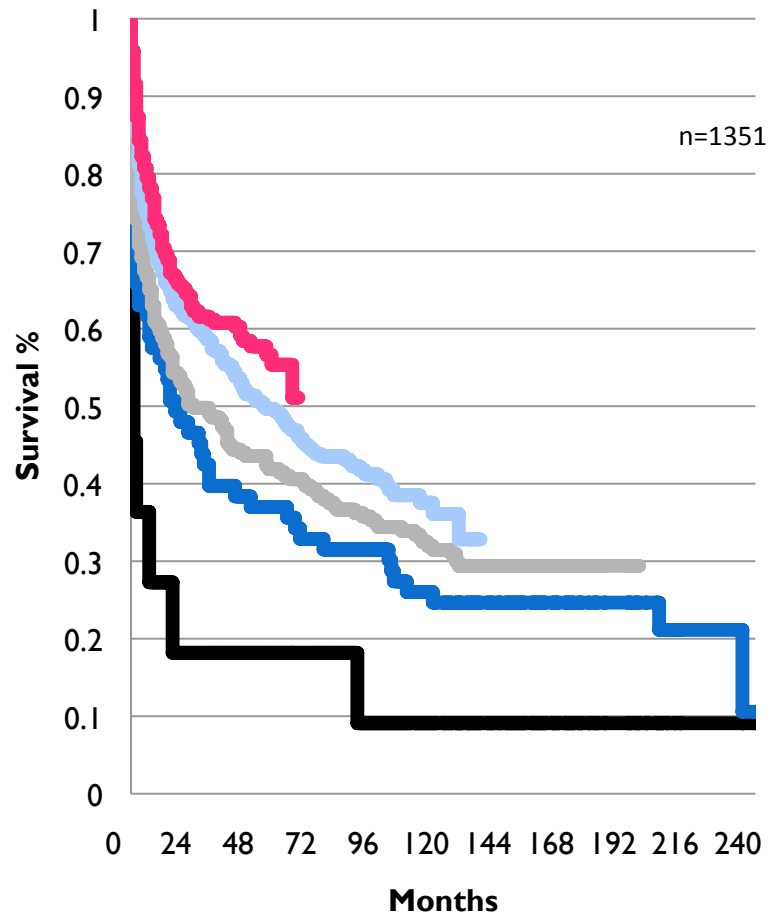
Median LOS Over Time



Patient Survival by Era

Children

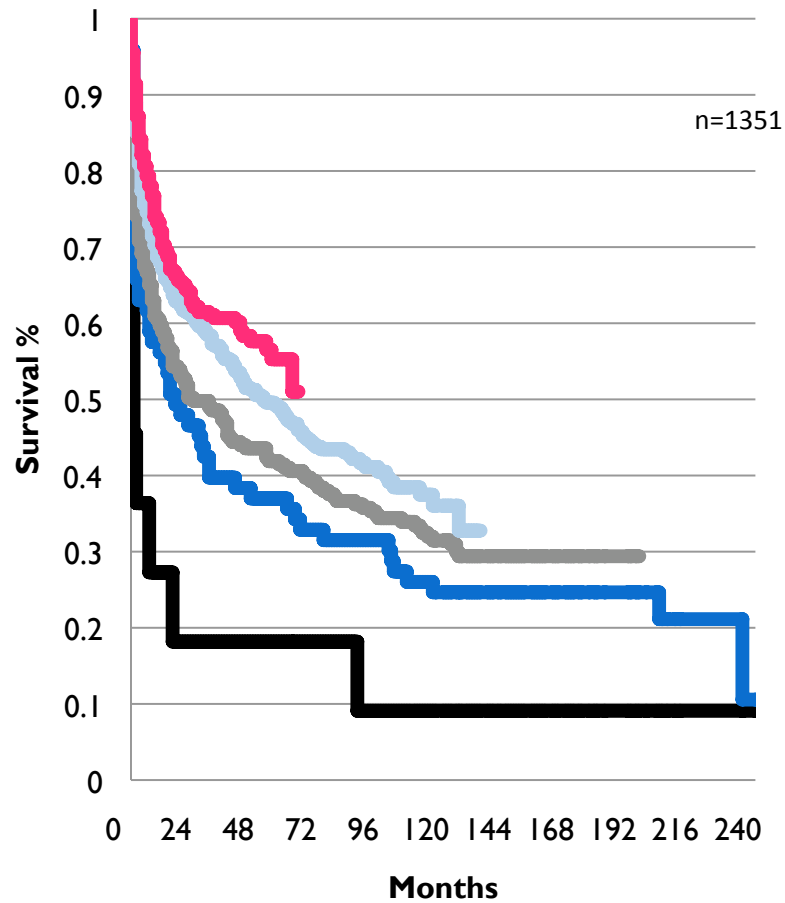
Adults



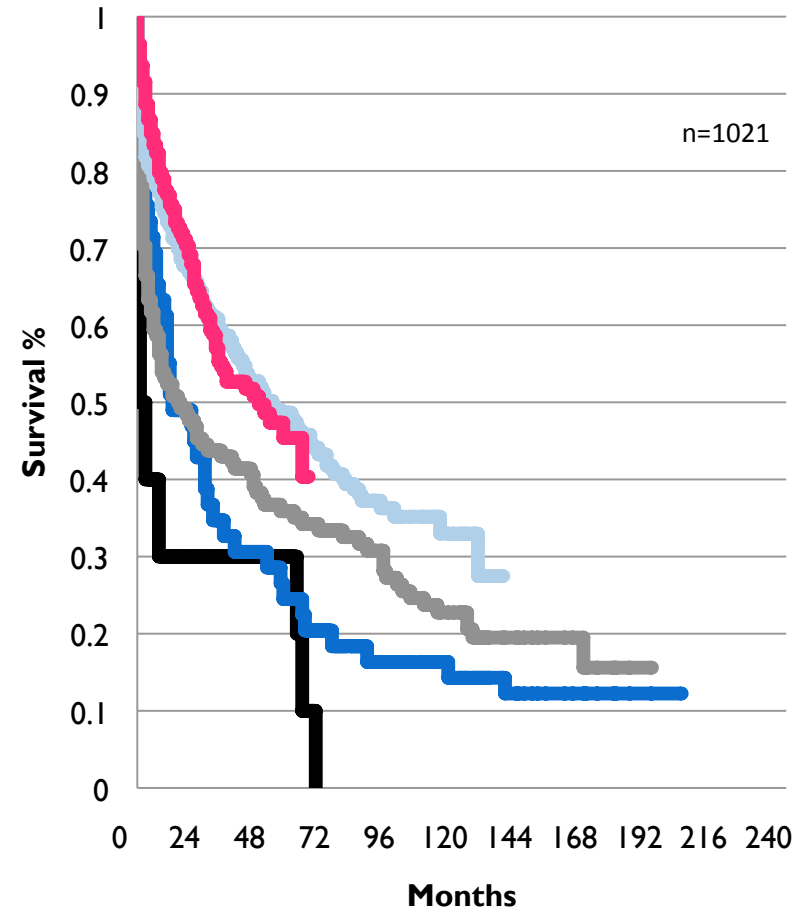
1: 1985-1989 2: 1990-1994 3: 1995-1999
 4: 2000-2005 5: 2006-2011

Graft Survival by Era

Children

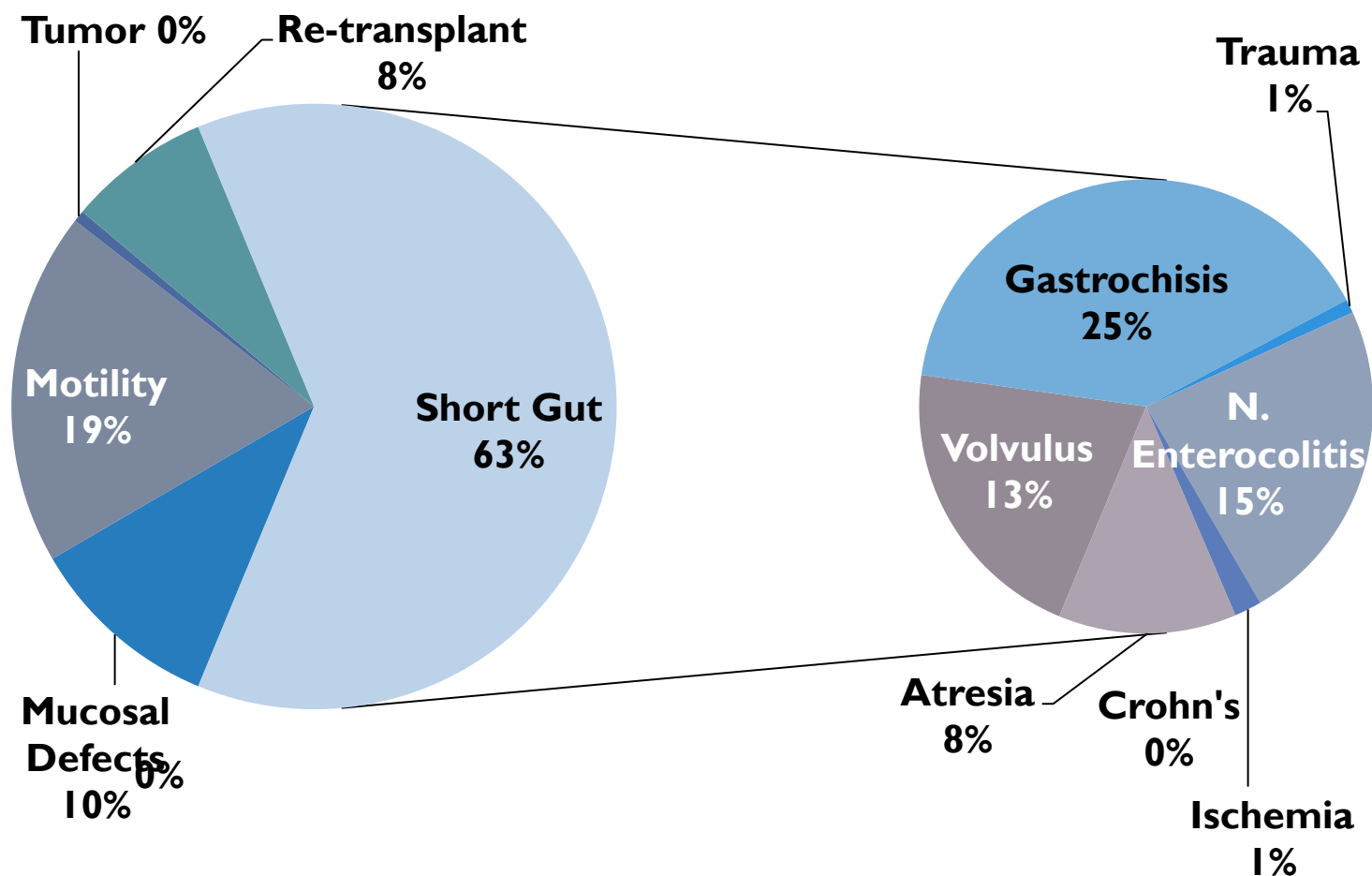


Adults

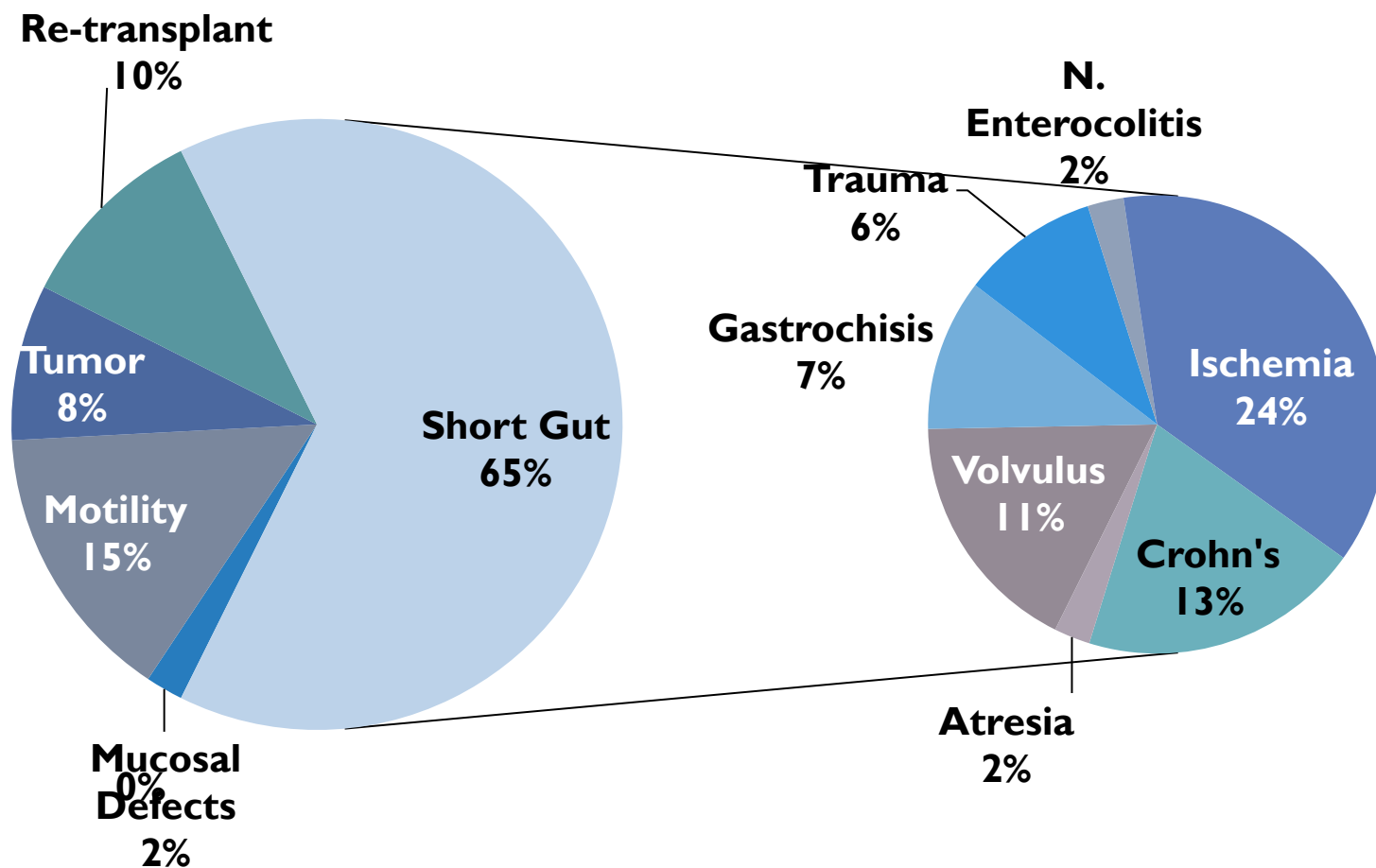


1: 1985-1989 2: 1990-1994 3: 1995-1999
 4: 2000-2005 5: 2006-2011

Causes for Transplantation in Current Era (Children)



Causes for Transplantation in Current Era (Adults)



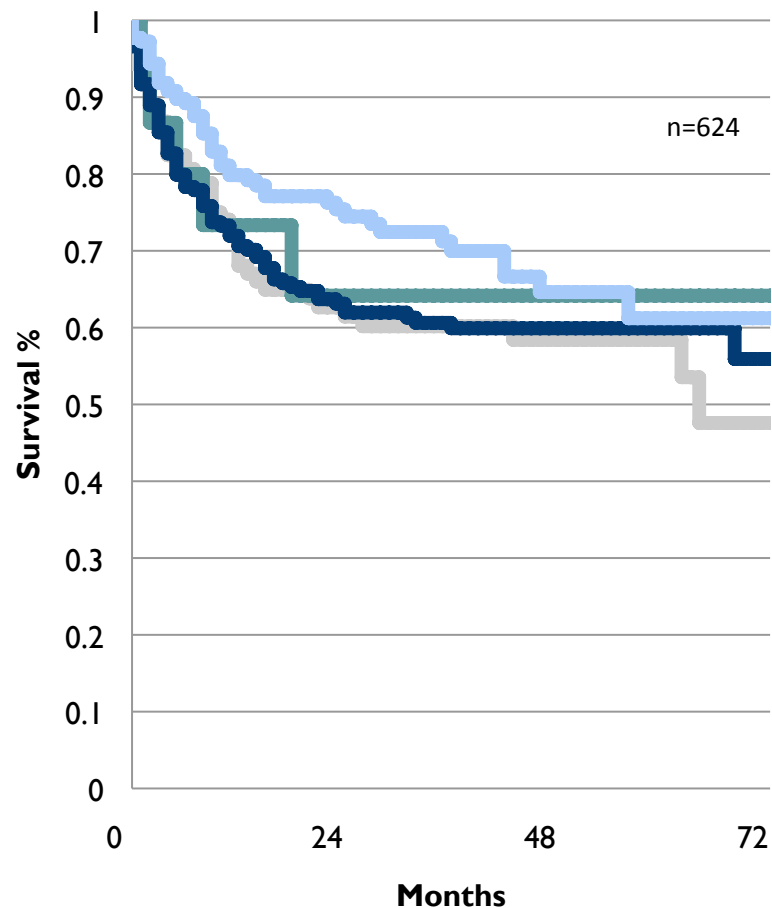


Patient Survival by Graft Type

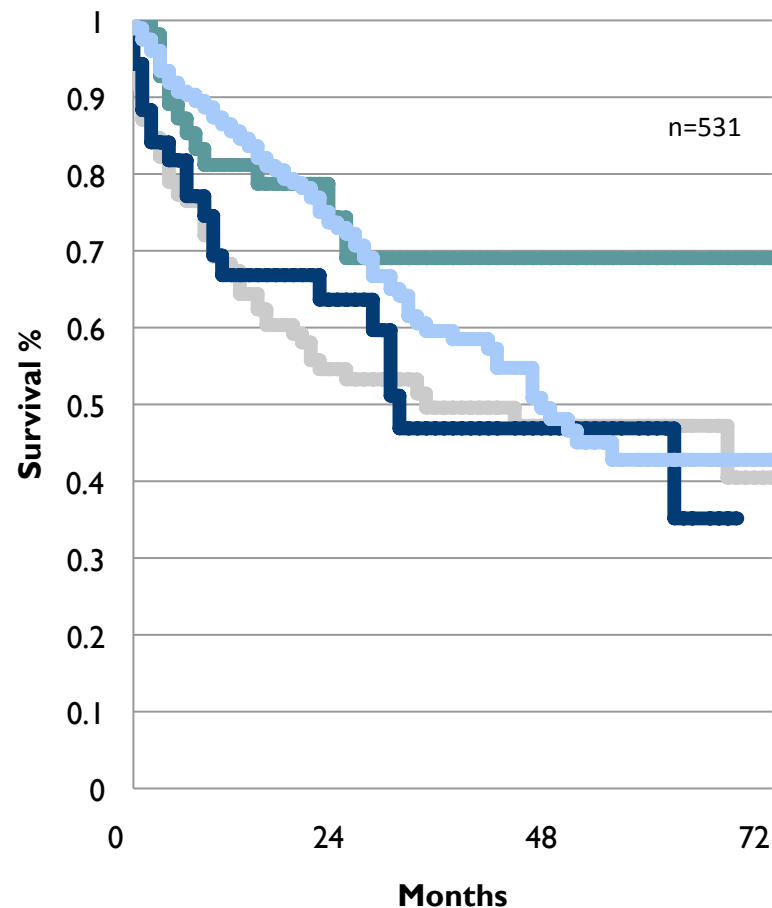
(2006-2011)



Children



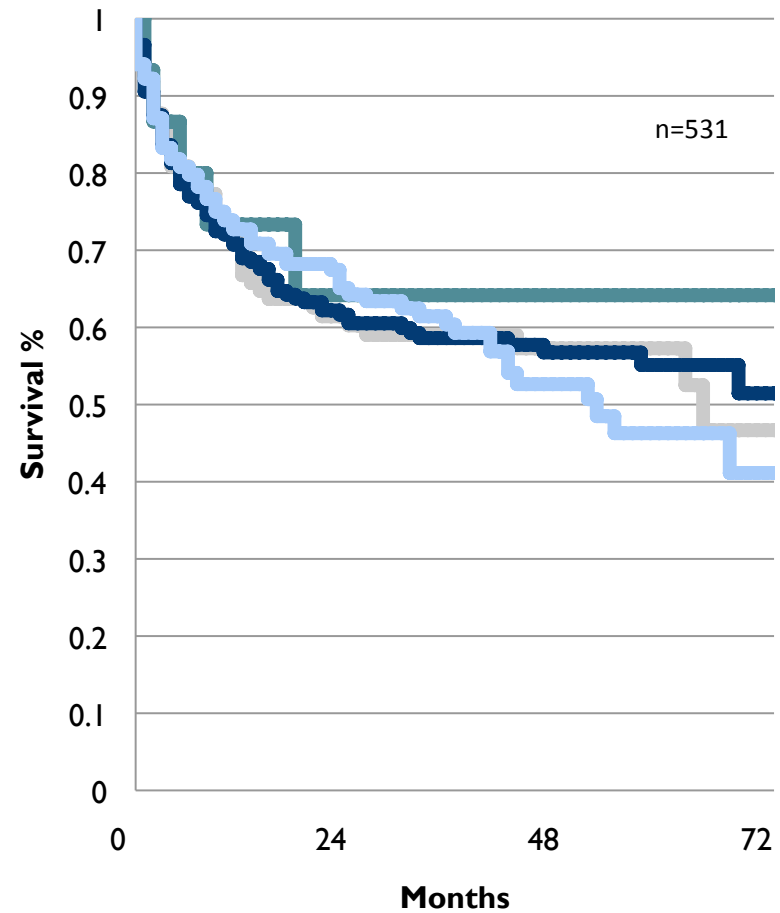
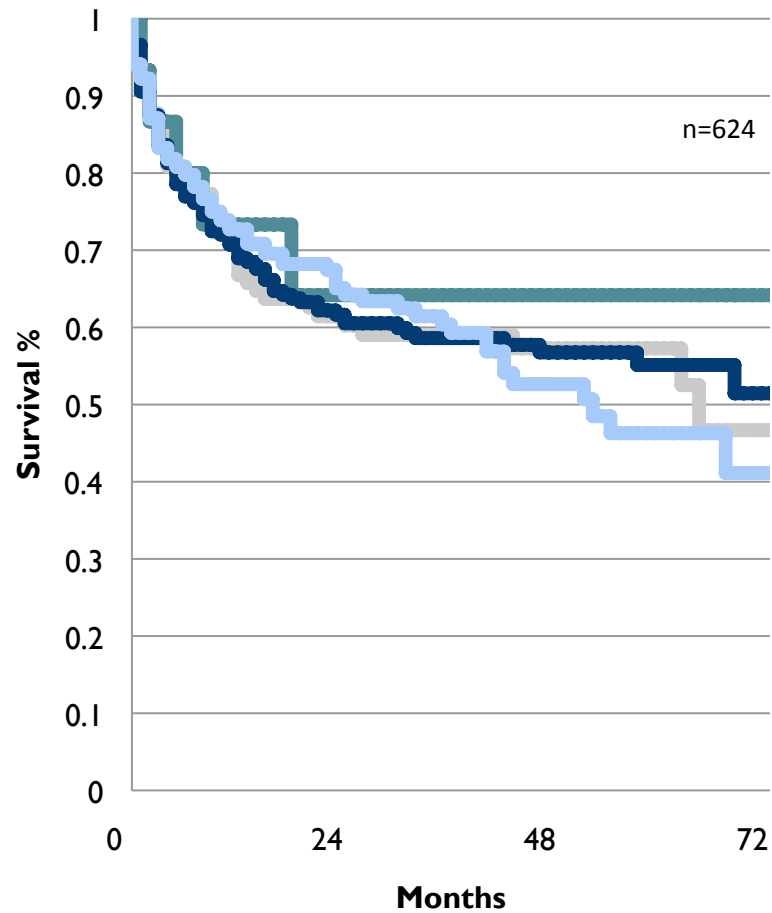
Adults



— MVT Full — MVT modified — SBliv — SBt

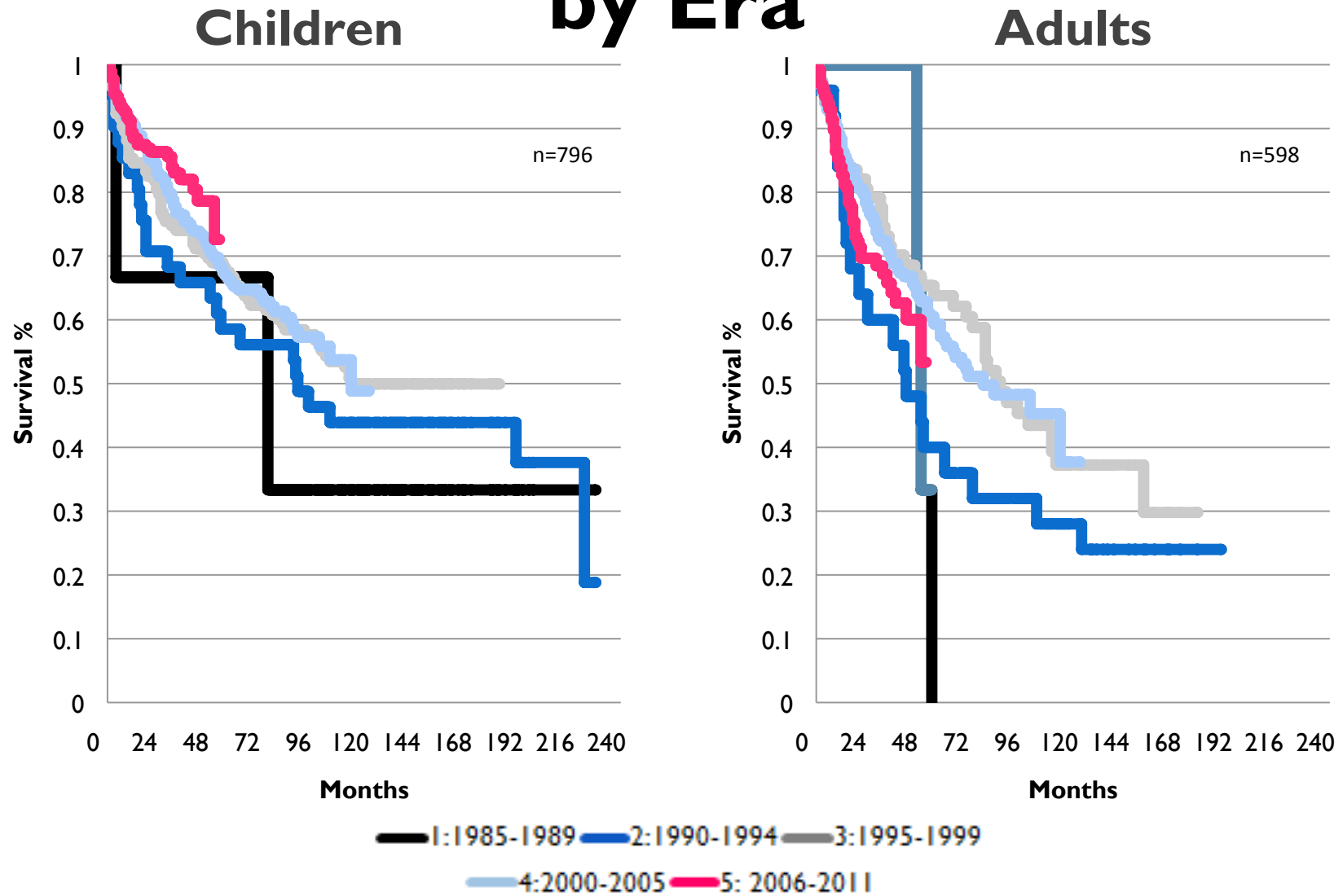
Graft Survival by Graft Type

Children (2006-2011) Adults



— MVT Full — MVT modified — SBliv — SBt

Conditional* Graft Survival by Era



* This analysis starts after 1 yr of graft survival.



Multiple Variable Regression Analysis: Preliminary Results



<u>End-point</u>	<u>Predictor</u>	<u>HR*</u>	<u>P value</u>
Graft Survival 2006-11	Age < 1 yr	1.23	0.04
	Top 40% program case volume	0.66	0.02
	Home	0.68	0
Conditional graft survival (all eras)	+ Liver component	0.68	0

** Lower ratio = improved survival*



Conditional Long Term Survival by Transplant Type

